

# VOLTA<sup>PRO</sup> STAGE 1

# VOLTA



#### ◆ Safer

Cobalt Free Lithium Iron Phosphate (LFP) Battery, safety and long lifespan and high-energy density. Low Voltage safety connection.

#### ◆ High performance

Support 1C/1C continual charge and discharge. 6000 cycles at 90% DOD, and 10 years standard warranty.

#### ◆ Reliable

Built-in Intelligent BMS, providing complete protection. Natural cooling, IP20, wide temperature range: -20°C to 60°C.

#### ◆ Flexible

Modular design, easy to expand, Max. 32 units in parallel, Max. capacity of 170kWh. Suited to residential and commercial applications for increasing the self-consumption ratio.

#### ◆ Convenient

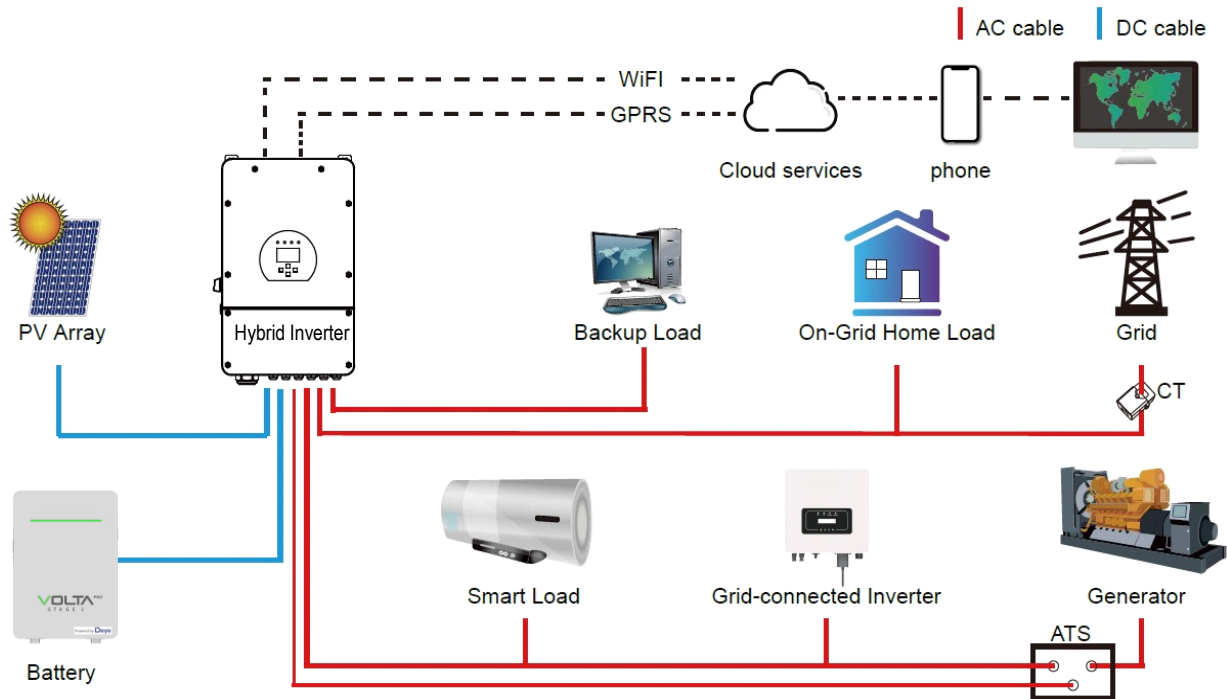
Battery module auto networking, easy maintenance, support Deye remotely monitoring and upgrade, support USB drive upgrade the firmware.

#### ◆ Eco-Friendly

Use environmental protection materials, the whole module non-toxic, pollution-free.

#### ◆ Two Mounting Methods

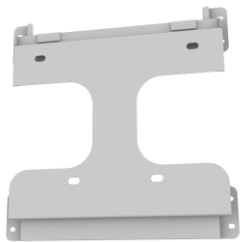
Flat design, Wall-mounted with Wall Bracket, Floor Stand with removable base, saving installation space.



## Parameters

Product Model	VOLTA <sup>PRO</sup> STAGE 1	
Nominal Energy (kWh)	5.32	
Nominal Voltage (V)	51.2	
Capacity (Ah)	104	
Battery Chemistry	LiFePO <sub>4</sub>	
Operating Voltage(V)	43.2~57.6	
Recommend Depth of Discharge	90%	
Usable Energy (kWh)	4.79	
Charge/Discharge Current (A)	Recommend	50
	Max.	100
	Peak	150 (2mins, 25°C)
Scalability	Max. 32 pcs pack (Max.170kWh) in parallel	
Communication Port	CAN2.0, RS485	
Cycle Life	≥6000(25°C±2°C, 0.5C/1C, 90%DOD, 70%EOL)	
Master LED Indicator	LED(SOC:0%~SOC100%)	
IP Rating of Enclosure	IP20	
Operating Temperature	Charge:0~55°C / Discharge:-20°C~60°C	
Storage Temperature	0°C~35°C	
Humidity	5%~95%	
Altitude	≤2000m	
Dimension (W/H/D, mm)	440*620*150	
Weight Approximate(kg)	46	
Installation	Floor-Mounted, Wall-Mounted	
Warranty Period	10 years	
Energy Throughput	16MWh@70%EOL	
Certification	UN38.3,MSDS	
Compatible With Inverter Brands	Deye, SUNSYNK, Voltronic Power, Victron energy, Growatt, SMA, LUXPOWER	

Model	Accessories Parts Description	Remark
H-Bracket	Battery Wall-Mounted Hanging Bracket and screws (Included)	Used for battery fixing on the wall.
B-Cable1000	Battery Parallel Cable (Included)	Battery power and communication parallel connection cable, and ground cable.
P-Cable1500	Hybrid inverter Cable (Included)	Battery power and communication cable connect with hybrid inverter.
Base	Battery Support Base and screws (Included)	The Support base for battery floor-mounted



**Model: H-Bracket**

**Details:** Simple wall hanging support, included 8 pcs M6 screws, 4 sets of M6 expansion screws.



**Model: B-Cable1000**

**Details:** Pair of 1000mm 4AWG Power cable (Both ends are M8 copper terminals), 800mm RJ45 communication cable, and 1000mm 10AWG yellow-green ground cable for battery parallel.



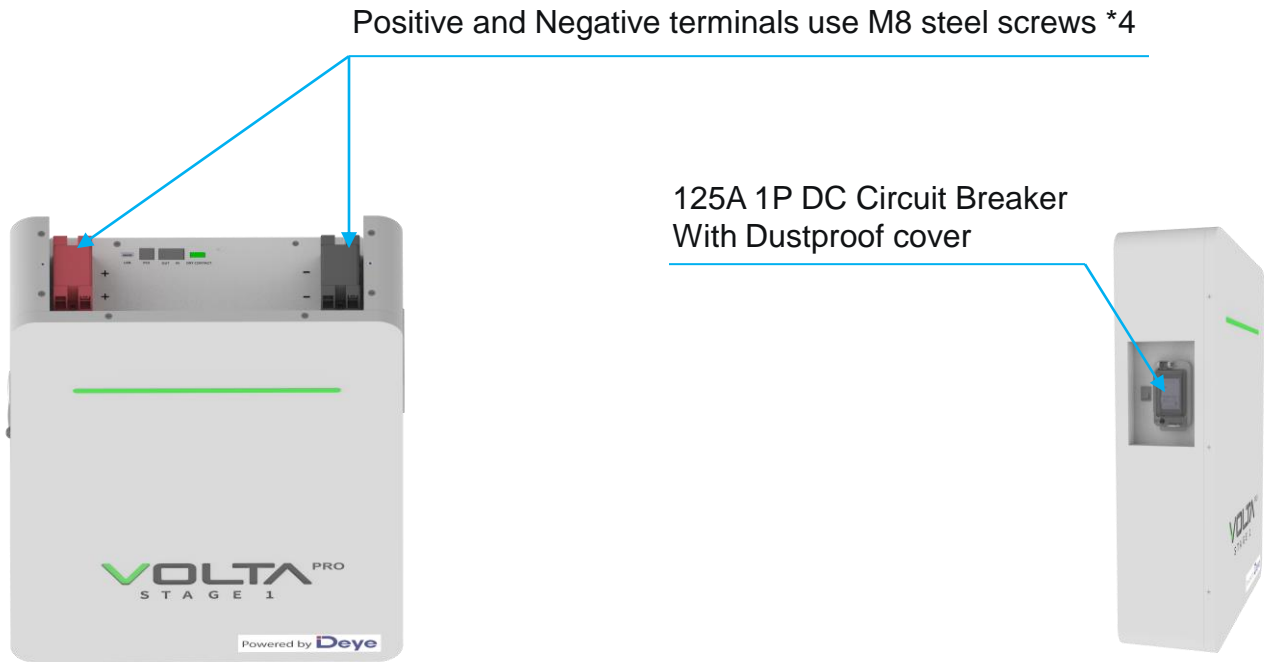
**Model: P-Cable1500**

**Details:** Pair of 1500mm 4AWG battery power cable (one end is M8 copper terminal, the other end is M10 copper terminal) and 1500mm RJ45 communication cable connect with hybrid inverter.



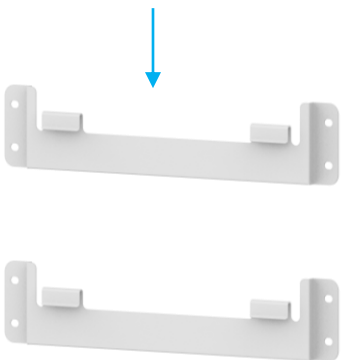
**Model: Base**

**Details:** Removable pair of battery support base for battery floor-mounted, included 8 pcs M6 screws, height is 20mm.

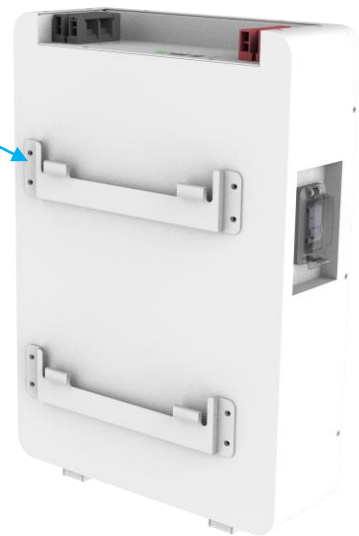


## Wall-mounted method

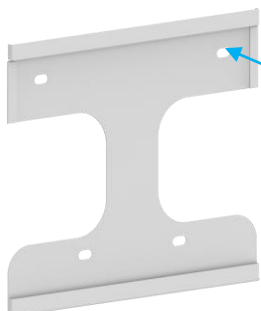
2 simple back bracket



Total 8 sets of M6 screws



1 simple wall bracket



4 sets of M6 stainless steel expansion screws